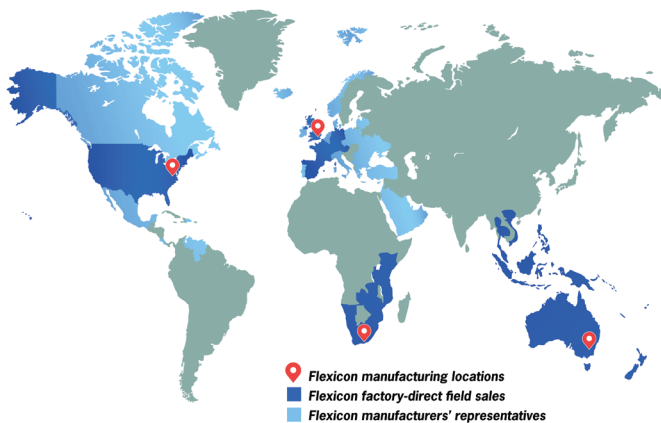







Sanitary Bulk Bag Weigh Batch Unloader

EE-0472



 Flexicon manufacturing locations
 Flexicon factory-direct field sales
 Flexicon manufacturers' representatives

flexicon®

USA

FLEXICON CORPORATION
Tel: +1 610 814 2400
E-mail: sales@flexicon.com
Web: www.flexicon.com

UK

FLEXICON (EUROPE) LTD
Tel: +44 1227 374710
E-mail: sales@flexicon.co.uk
Web: www.flexicon.co.uk

AUSTRALIA

FLEXICON CORPORATION
(AUSTRALIA) PTY LTD
Tel: +61 7 3879 4180
E-mail: sales@flexicon.com.au
Web: www.flexicon.com.au

SOUTH AFRICA

FLEXICON AFRICA (PTY) LTD
Tel: +27 41 453 1871
E-mail: sales@flexicon.co.za
Web: www.flexicon.co.za

SPAIN

FLEXICON EUROPE SPAIN
Tel: +34 930 020 509
E-mail: ventas@flexicon.es
Web: www.flexicon.es

FRANCE

FLEXICON EUROPE SAS
Tel: +33 7 61 36 56 12
E-mail: ventes@flexicon.fr
Web: www.flexicon.fr

GERMANY

FLEXICON EUROPE GmbH
Tel: +49 173 900 78 76
E-mail: vertrieb@flexiconeurope.de
Web: www.flexicondeutschland.de

SINGAPORE

FLEXICON SINGAPORE PTE LTD
Tel: +65 6778 9225
E-mail: sales@flexicon.com.sg
Web: www.flexicon.com.sg

INDONESIA

FLEXICON SINGAPORE PTE LTD
Tel: +62 81 1103 2400
E-mail: sales@flexicon.co.id
Web: www.flexicon.co.id

Sanitary Bulk Bag Weigh Batch Unloader

This BULK-OUT® Bulk Bag Weigh Batch Unloading System with Manual Dumping Station and Flexible Screw Conveyor automatically conveys weighed batches of contamination-sensitive materials to downstream processes and allows rapid sanitizing.

The BFC model discharger frame is equipped with a cantilevered I-beam with electric hoist and trolley for positioning of bulk bags without the use of a forklift. A SPOUT-LOCK® clamp ring atop a TELE-TUBE® telescoping tube securely connects the clean side of the bag spout to the clean side of the equipment intake, and maintains constant downward tension on the bag as it empties and elongates, promoting complete discharge from the bag.

At timed intervals, FLOW-FLEXER® bag activators increasingly raise opposite bottom edges of the bag as it lightens, ultimately forming a steep V-shape that promotes complete discharge of free- and non-free-flowing materials from the bag.

A bag dump station with folding bag shelf allows manual dumping of minor additions into the hopper from hand-held packaging and containers.

The hopper is vented to a BAG-VAC® dust collection system that draws airborne dust from manual dumping activities away from the operator when the hopper lid is open. When the hopper lid is closed during bulk bag discharging, the dust collection system additionally prevents displaced air and dust from entering the plant atmosphere, and collapses empty bags prior to tie-off, preventing dust generated when empty bags are flattened manually.

A FLEXI-FORCE® lump breaker integral to the hopper reduces agglomerates and promotes the continuous flow of material into the charging adapter of the flexible screw conveyor.

Load cells supporting the entire system are linked to a PLC that stops the flexible screw conveyor once the system has lost a pre-set amount of weight.

The flexible screw is the only moving part contacting material, and is driven above the point at which material exits the conveyor, preventing material contact with seals and allowing rapid sanitizing in place. The screw can also be removed through the bottom of the tube for sanitizing and inspection.

Positioned above the clamp ring is a POWER-CINCHER® pneumatically-actuated flow control valve that cinches the spout concentrically, allowing re-cinching of partially empty bags for leak-free tie-offs.

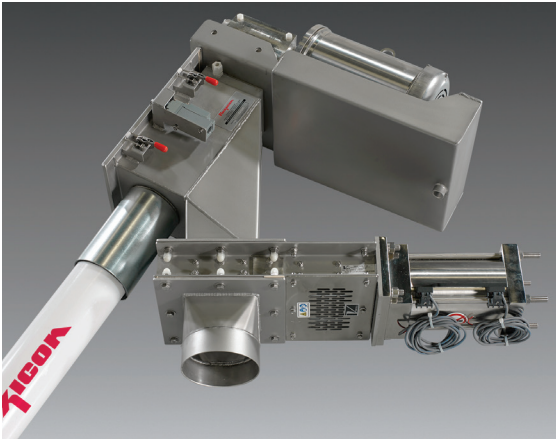
The entire system is constructed of stainless steel finished to sanitary standards, and is rated for wash down.



BULK-OUT® Sanitary Bulk Bag Weigh Batch Unloading System with integral flexible screw conveyor and BAG-VAC® dust collector shown with safety interlocked doors in open position and manual dumping station bag tray in lowered position.



BULK-OUT® Sanitary Bulk Bag Weigh Batch Unloading System shown with safety interlocked doors in open position and manual dumping station bag tray in lowered position.



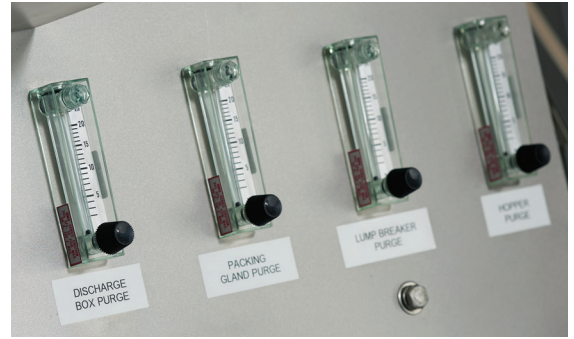
The all-stainless-steel flexible screw conveyor discharge, complete with motor drive, air purged packing gland for the drive shaft and pneumatically-actuated slide gate valve, is rated for wash down.



BULK-OUT® Sanitary Bulk Bag Weigh Batch Unloading System shown with air purge pressure gauges, programmable control panel and flexible screw conveyor with integral lump breaker.



The all-stainless-steel flexible screw conveyor discharge, complete with motor drive, air purged packing gland for the drive shaft and pneumatically-actuated slide gate valve, is rated for wash down.



Pressure gauges allow monitoring of dry air purges employed to prevent agglomeration of hygroscopic material at all locations within the conveyor and at all rotating shafts.



A FLEXI-FORCE® lump breaker with twin shafts and air purge seals reduces agglomerates and promotes the continuous flow of material into the charging adapter of the flexible screw conveyor.



Manual dumping station of BULK-OUT® Bulk Bag Weigh Batch Unloading System shown with hinged hopper lid and bag tray in raised positions, ready to receive minor ingredients dumped manually.



Stainless steel over-center quick-release clamps secure the hinged hopper lid during discharge of material from bulk bags.

flexicon®
 USA
 FLEXICON CORPORATION
 Tel: +1 610 814 2400
 E-mail: sales@flexicon.com
 Web: www.flexicon.com